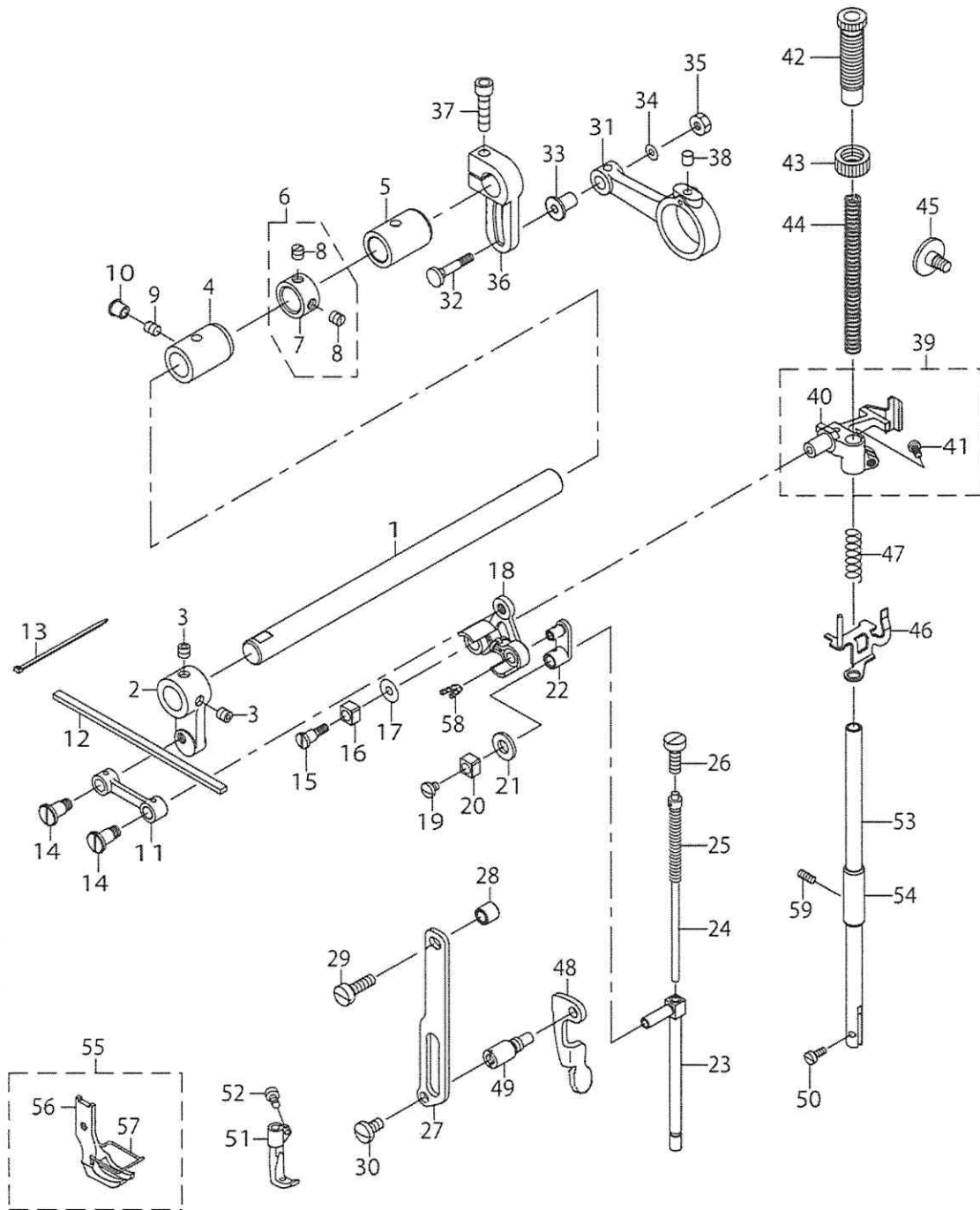


PRESSURE ADJUSTING & UPPER FEED MECHANISM COMPONENTS



PRESSURE ADJUSTING & UPPER FEED MECHANISM COMPONENTS

No.	Supply Code	Parts No.	Replacement	Parts name	Remarks	Choice	Step	Level	Cons	Qty	Rep. QTY
1		21340401		UPPER FEED SHAFT						1	
2		21340500		UPPER FEED FRONT ARM						1	
3		SS8660612TP		SCREW 1/4-40 L=6						2	
4		21341904		FRONT METAL						1	
5		21378302		FEED SHAFT METAL						1	
6		22904155		MAIN SHAFT THRU-ST COLLAR ASM.						1	
7	R	22904106	22904155	MAIN SHAFT THRUST COLLAR				*		1	1.00
8		SS8660610TP		SCREW 1/4-40 L=6				*		2	
9		SS8150710TP		SCREW 15/64-28 L=7						1	
10		TA0750704R0		RUBBER PLUG						1	
11		40033026		UPPER FEED LINK						1	
12		21347109		FELT						1	
13		EA9500B0000		CLIP CV-70S						2	
14		40018340		SCREW						2	
15		40018339		SCREW						1	
16		B1414555000		SLIDE BLOCK						1	
17		WP0501046SC		WASHER 5 X 14 X 1						1	
18		40033029		TRIANGULAR LEVER ASM.						1	
19		SS7110510SP		SCREW 11/64-40 L=5						1	
20		B1414555000		SLIDE BLOCK						1	
21		10509701		FELT						1	
22		40018341		WALKING BAR DRIVING LINK						1	
23		40033030		WALKING BAR A						1	
24		B14670530A0		WALKING BAR ASM.						1	
25		B1468053000		WALKING BAR SPRING						1	
26		SS6151780SP		SCREW 15/64-28 L=17.0						1	
27		21406509		UPPER FEED GUIDE PLATE						1	
28		26225201		ROLLER						1	
29		SS6151920SP		SCREW 15/64-28 L=19.0						1	
30		SS7150740SP		SCREW 15/64-28 L=7						1	
31		21340104		UPPER FEED ROD						1	
32		D1456055B00		HINGE SCREW						1	
33		D1455055B00		CONNECTING STUD						1	
34		WP0482086SD		WASHER 4.8X11.5X2						1	
35		NS6110530SP		NUT 11/64-40						1	
36		21437900		UPPER FEED REAR ARM						1	
37		SM6062502TP		SCREW M6 L=25						1	
38		22814909		FELT						1	
39		40033032		PRESSER BAR HOLDER A ASM.						1	
40		40033031		PRESSER BAR HOLDER A				*		1	
41		SS7110910TP		SCREW 11/64-40 L= 8.5				*		1	
42		21340906		PRESSER ADJUSTING SCREW						1	
43	R	22907604	22907554	PRESSER SPRING REGULATOR NUT						1	1.00
44		B1502246000		PRESSER SPRING						1	
45		SD0800481SP		HINGE SCREW D= 8 H= 4.9						1	